

SECTION A-A

STATIC TORQUE RECOMMENDATION: 17-26 in-lbs  
 REQUIREMENT MAY VARY DEPENDING UPON CONTAINER MATERIAL,  
 NECK FINISH, AND CAPPING EQUIPMENT

DIMENSIONS ENCLOSED IN ( ) INDICATE REFERENCE DIMENSIONS  
 AND NO TOLERANCE LIMITS ARE ESTABLISHED

DIMENSIONS PRECEDED BY AN \*\*\* INDICATE THE DIMENSION IS  
 PROCESS SENSITIVE. PROCESS SENSITIVE DIMENSIONS ARE  
 VERIFIED TO BE WITHIN THE TOLERANCE LIMITS DURING THE  
 PRODUCTION RUN. ALL REMAINING DIMENSIONS ARE VERIFIED AT  
 PRODUCTION VALIDATION.

PROPRIETARY AND CONFIDENTIAL  
 THIS DRAWING IS PROTECTED BY COPYRIGHT AND CONTAINS  
 INFORMATION PROPRIETARY TO MOLD-RITE PLASTICS AND ITS  
 SUBSIDIARIES. ANY REPRODUCTION, DISCLOSURE, OR USE OF  
 ITS CONTENTS OR ANY PART THEREOF IS EXPRESSLY  
 PROHIBITED EXCEPT AS MOLD-RITE PLASTICS AND ITS  
 SUBSIDIARIES OTHERWISE MAY AGREE IN WRITING.

THIS MASTER DOCUMENT IS CONTROLLED ELECTRONICALLY.  
 PRINTED OR DOWNLOADED COPIES ARE UNCONTROLLED.  
 DOCUMENT USERS ARE RESPONSIBLE FOR ENSURING THEY HAVE  
 THE LATEST REVISION PRIOR TO USE.

THE PART DIMENSIONS DEPICTED ARE THOSE WHICH HAVE GENERALLY BEEN FOUND TO BE FUNCTIONAL BASED ON INDUSTRY EXPERIENCE.  
 BECAUSE OF VARIABILITY IN CONTAINER FINISHES, EACH CLOSURE/FINISH SYSTEM SHOULD BE INDIVIDUALLY EVALUATED AND TESTED TO  
 ENSURE IT MEETS APPLICABLE PERFORMANCE CRITERIA.

MOLD-RITE PLASTICS AND ITS SUBSIDIARIES RESERVE THE RIGHT TO REVISE ANY OR ALL SPECIFICATIONS AND REQUIREMENTS.

REFERENCE	DIMENSION	TOLERANCE	UNITS
E	1.396 [35.46]	±0.010 [0.25]	in [mm]
T	1.488 [37.80]	±0.010 [0.25]	in [mm]
H (Seated)	0.521 [13.23]	REFERENCE	in [mm]
H (Inner)	0.388 [9.86]	±0.008 [0.20]	in [mm]
OD	1.760 [44.70]	±0.013 [0.33]	in [mm]
OAH	0.671 [17.04]	±0.011 [0.28]	in [mm]
PART WEIGHT	7.1	± 0.7	g
THREAD DETAIL INFORMATION:	6 THREADS PER INCH	0.167" [4.24] PITCH	380° FULL DEPTH THREADS



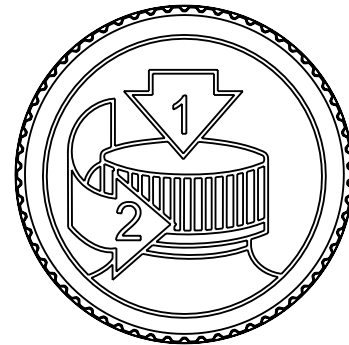
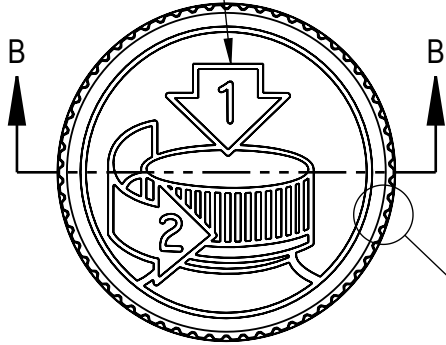
DRAWING TITLE:  
**38-400 CRC ASSM**  
 PICTO

MATERIAL: POLYPROPYLENE  
 DRAWING TYPE: CUSTOMER DISTRIBUTION CODE: D

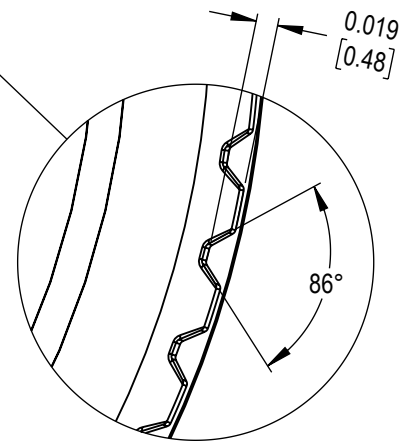
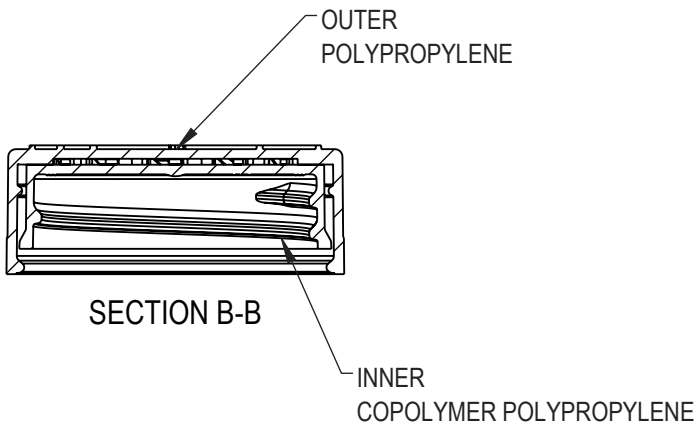
REPLACES DRAWINGS: C-8019  
 MODEL NUMBER: PM-10161 38-400 CRC ASSM

DRAWN BY: BDG	4/28/2016	DWG SIZE: 8.5" x 11"	DRAWING NUMBER:	REVISION:
ENG APPR: BDG	1/31/2017	SCALE: 1:1 & NOTED	SHEET: 1 OF 3	CQA-10023 04.AF
QA APPR: ACP	2/1/2017			

INSTRUCTIONS EMBOSSES



ALTERNATE PICTO  
INSTRUCTIONS  
(SIDE GATED MOLD)



DETAIL RIB  
SCALE 6 : 1  
(62) EQUISPACED RIBS

DATE	REV	N/P	DESCRIPTION	ENG	DRW
01/30/2017	04	AD	DRAWING FORMAT UPDATED. ADDED H(SEATED) AS REFERENCE DIMENSION	BDG	BDG
06/14/2023	04	AE	UPDATED DRAWING FORMAT AND LOGO	BDG	BDG
07/26/2023	04	AF	ADD C-8019 TO REFERENCE DRAWINGS	LES	LES

REVISIONS: REV: A PHYSICAL CHANGE TO THE PART IMPACTING FIT, FORM OR FUNCTION  
N/P: DRAWING OR SPECIFICATION CHANGE ONLY

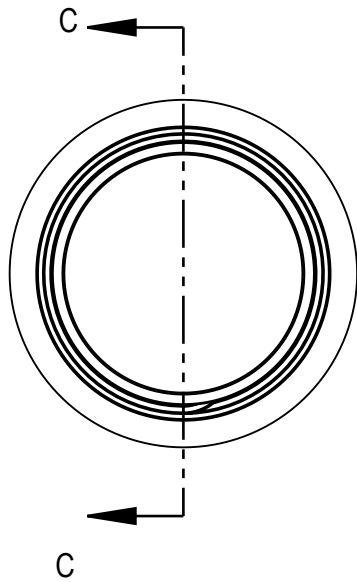


DRAWING TITLE: <b>38-400 CRC ASSM PICTO</b>		
THIS MASTER DOCUMENT IS CONTROLLED ELECTRONICALLY. PRINTED OR DOWNLOADED COPIES ARE UNCONTROLLED. DOCUMENT USERS ARE RESPONSIBLE FOR ENSURING THEY HAVE THE LATEST REVISION PRIOR TO USE.		
DRAWING TYPE: CUSTOMER	DISTRIBUTION CODE: <b>D</b>	
DWG SIZE: 8.5" x 11"	DRAWING NUMBER:	REVISION:
SCALE: 1:1 & NOTED	SHEET: 2 OF 3	<b>CQA-10023 04.AF</b>

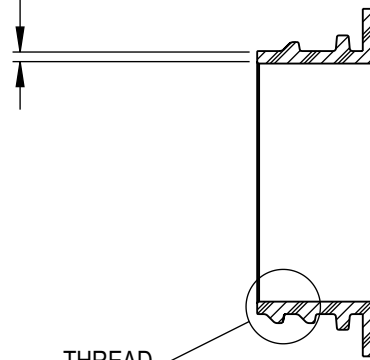
DIMENSIONS ENCLOSED IN ( ) INDICATE REFERENCE DIMENSIONS AND NO TOLERANCE LIMITS ARE ESTABLISHED

PROPRIETARY AND CONFIDENTIAL  
THIS DRAWING IS PROTECTED BY COPYRIGHT AND CONTAINS INFORMATION PROPRIETARY TO MOLD-RITE PLASTICS AND ITS SUBSIDIARIES. ANY REPRODUCTION, DISCLOSURE, OR USE OF ITS CONTENTS OR ANY PART THEREOF IS EXPRESSLY PROHIBITED EXCEPT AS MOLD-RITE PLASTICS AND ITS SUBSIDIARIES OTHERWISE MAY AGREE IN WRITING

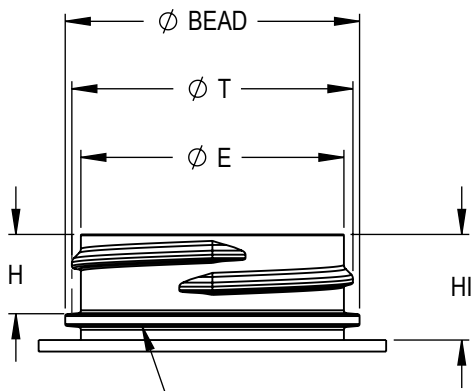
THE PART DIMENSIONS DEPICTED ARE THOSE WHICH HAVE GENERALLY BEEN FOUND TO BE FUNCTIONAL BASED ON INDUSTRY EXPERIENCE  
BECAUSE OF VARIABILITY IN CONTAINER FINISHES, EACH CLOSURE/FINISH SYSTEM SHOULD BE INDIVIDUALLY EVALUATED AND TESTED TO ENSURE IT MEETS APPLICABLE PERFORMANCE CRITERIA.  
MOLD-RITE PLASTICS AND ITS SUBSIDIARIES RESERVE THE RIGHT TO REVISE ANY OR ALL SPECIFICATIONS AND REQUIREMENTS.



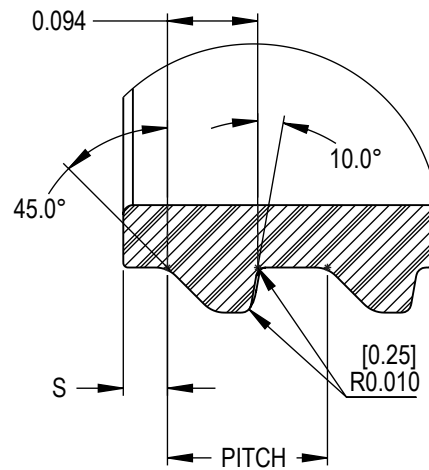
0.050 [1.27] MINIMUM FLAT  
RECOMMENDED FOR  
PROPER INDUCTION SEAL



THREAD  
SECTION C-C



BEAD IS NOT REQUIRED  
FOR CHILD RESISTANT  
CLOSURE FUNCTION



DETAIL THREAD  
SCALE 5 : 1

THREAD DETAIL

CHILD RESISTANT PROTOCOL TESTING NOTE: MOLD-RITE PLASTICS, LLC CERTIFIES THAT ITS CHILD RESISTANT CLOSURES PASSED TESTS OUTLINED IN 16 CFR SECTION 1700.20 TESTING PROCEDURE AND MEET WITH REQUIREMENTS DEFINED BY 16 CFR SECTION 1700.15 POISON PREVENTION PACKAGING STANDARDS, GENERALLY. IT IS RECOMMENDED THAT CUSTOMERS CONDUCT TESTING TO CONFIRM CLOSURES PERFORM AS EXPECTED WITH THEIR SPECIFIC CONTAINERS AND CONDITIONS OF USE.

RECOMMENDED NECK FINISH IS DETERMINED FOR PROPER FUNCTIONAL PERFORMANCE WITH MOLD-RITE CLOSURE. USE OF MOLD-RITE CLOSURE WITH CONTAINER NOT MATCHING RECOMMENDED NECK FINISH SHOULD BE TESTED AND CONFIRMED FOR APPLICATION BY THE USER.

NOMINAL ORIENTATION OF CLOSURE (IF INDICATED) IS BASED ON NOMINAL DIMENSIONS OF BOTH CLOSURE AND RECOMMENDED NECK FINISH. FOR EXACT ORIENTATION, EACH CONTAINER SHOULD BE EVALUATED ON A CASE BY CASE BASIS.

DIMENSIONS ENCLOSED IN ( ) INDICATE REFERENCE DIMENSIONS AND NO TOLERANCE LIMITS ARE ESTABLISHED

PROPRIETARY AND CONFIDENTIAL  
THIS DRAWING IS PROTECTED BY COPYRIGHT AND CONTAINS INFORMATION PROPRIETARY TO MOLD-RITE PLASTICS AND ITS SUBSIDIARIES. ANY REPRODUCTION, DISCLOSURE, OR USE OF ITS CONTENTS OR ANY PART THEREOF IS EXPRESSLY PROHIBITED EXCEPT AS MOLD-RITE PLASTICS AND ITS SUBSIDIARIES OTHERWISE MAY AGREE IN WRITING

THE PART DIMENSIONS DEPICTED ARE THOSE WHICH HAVE GENERALLY BEEN FOUND TO BE FUNCTIONAL BASED ON INDUSTRY EXPERIENCE. BECAUSE OF VARIABILITY IN CONTAINER FINISHES, EACH CLOSURE/FINISH SYSTEM SHOULD BE INDIVIDUALLY EVALUATED AND TESTED TO ENSURE IT MEETS APPLICABLE PERFORMANCE CRITERIA.

MOLD-RITE PLASTICS AND ITS SUBSIDIARIES RESERVE THE RIGHT TO REVISE ANY OR ALL SPECIFICATIONS AND REQUIREMENTS.

REFERENCE	DIMENSIONS	TOLERANCE	UNITS
E	1.370 [34.80]	±0.012 [0.30]	in [mm]
T	1.464 [37.19]	±0.012 [0.30]	in [mm]
S	0.046 [1.17]	±0.015 [0.38]	in [mm]
H	0.403 [10.24]	MINIMUM	in [mm]
H1	0.550 [13.97]	MINIMUM	in [mm]
BEAD	1.545 [39.24]	MAXIMUM	in [mm]
TPI	6		
PITCH	0.167 [4.24]		in [mm]



DRAWING TITLE:  
**38-400 CRC ASSM**  
PICTO  
RECOMMENDED NECK FINISH

THIS MASTER DOCUMENT IS CONTROLLED ELECTRONICALLY. PRINTED OR DOWNLOADED COPIES ARE UNCONTROLLED. DOCUMENT USERS ARE RESPONSIBLE FOR ENSURING THEY HAVE THE LATEST REVISION PRIOR TO USE.

DRAWING TYPE: CUSTOMER		DISTRIBUTION CODE: D	
DWG SIZE: 8.5" x 11"	DRAWING NUMBER:	REVISION:	
SCALE: 1:1 & NOTED	SHEET: 3 OF 3	CQA-10023	04.AF